



THE PORCHES

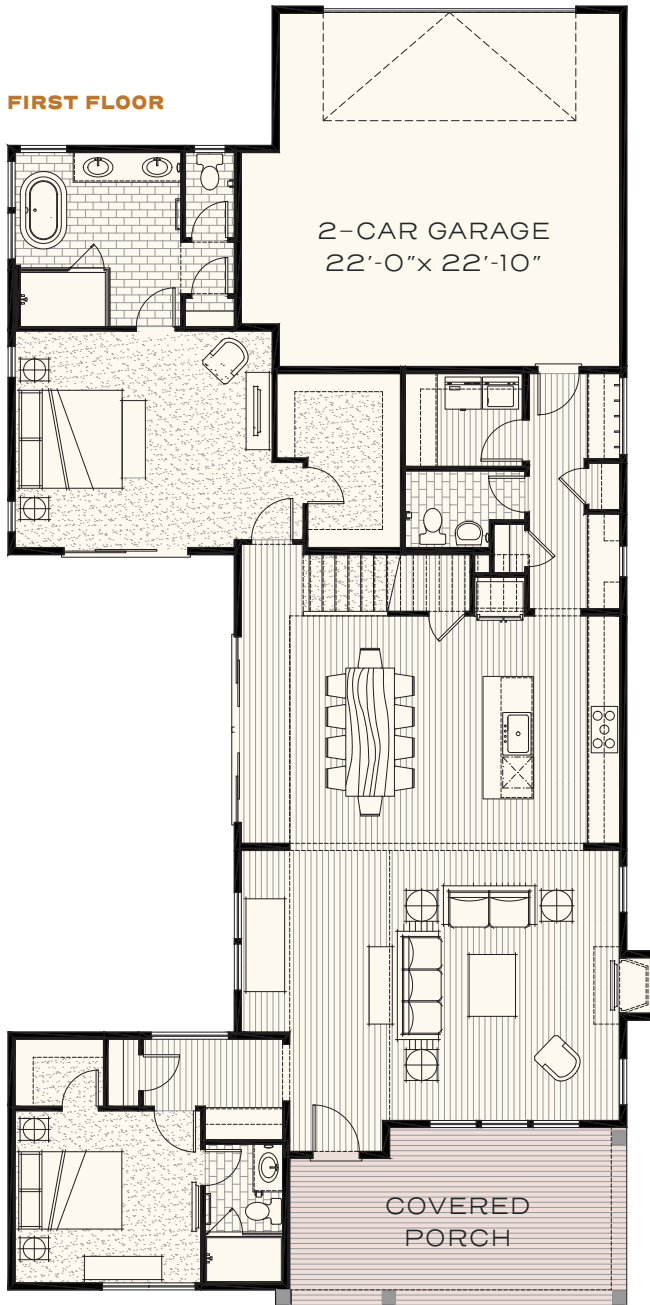
Plan 2

4 BEDROOMS | 3.5 BATHROOMS
2,664 SF + 238 SF COVERED PORCH

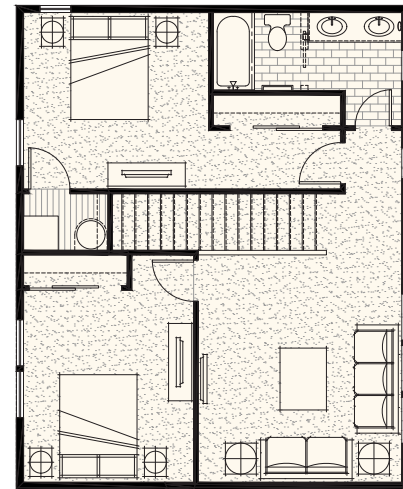
- Large primary bedroom with direct courtyard access, walk-in closet, double vanity, oversized shower & standing tub
- Ground-floor junior primary bedroom with en-suite bathroom & walk-in closet
- Second-level bedrooms with full bath and den/flex space
- Double-height great room with fireplace



FIRST FLOOR



SECOND FLOOR



115 W Kagy Blvd, Suite L | Bozeman, MT 59715 | info@blackwoodgroves.com | blackwoodgroves.com

