



THE PORCHES

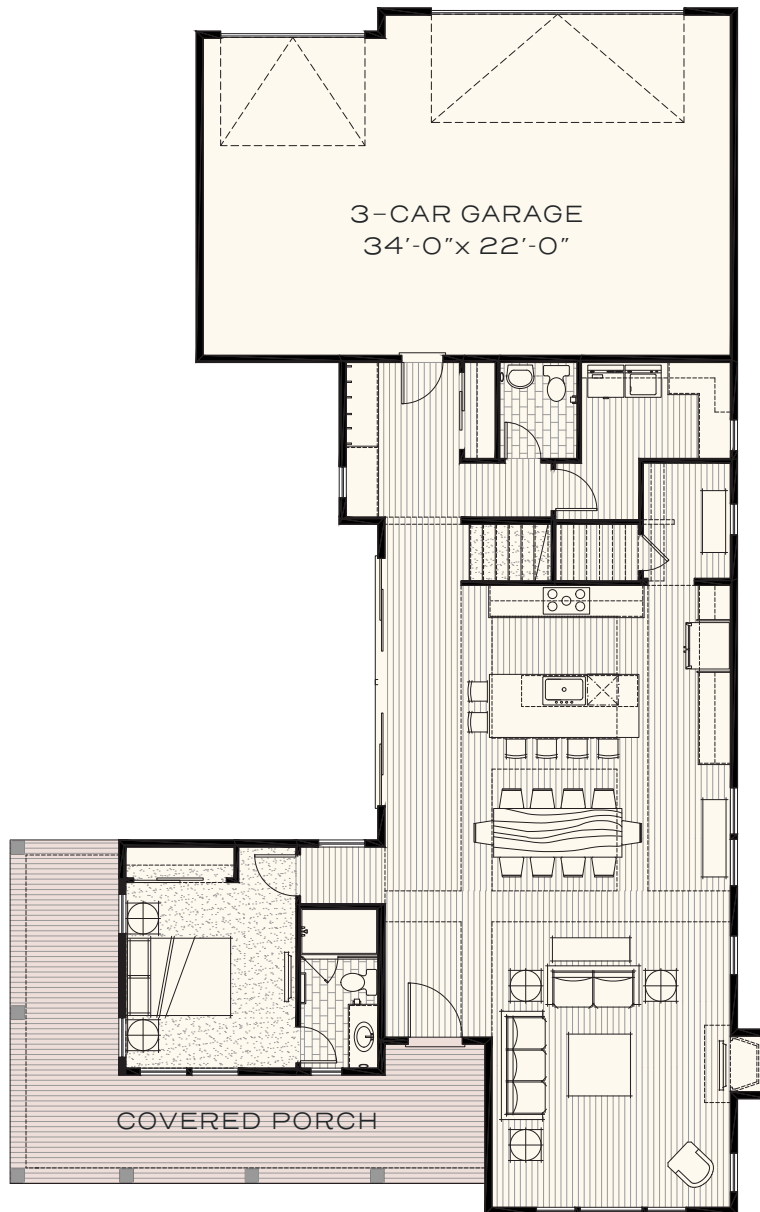
Plan 3X

4 BEDROOMS | 3.5 BATHROOMS
2,787 SF + 334 SF COVERED PORCH

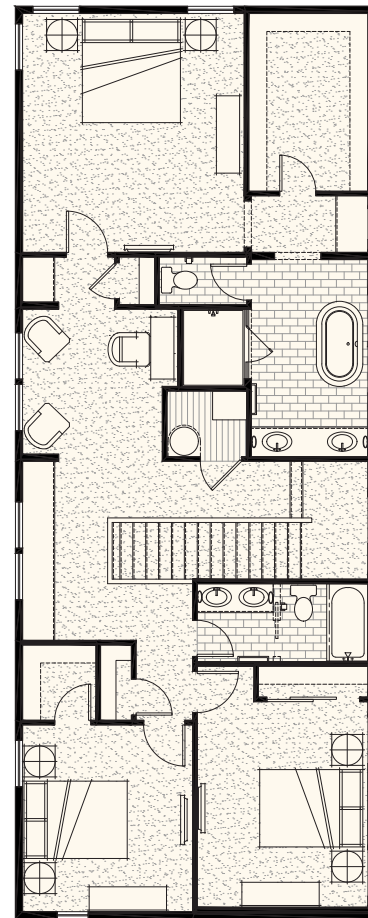
- Expansive wraparound porch for premier corner homesites
- Large upstairs primary bedroom with walk-in closet, double vanity, shower & standing tub
- Junior en-suite bedroom on the ground floor
- Upstairs family den and bedrooms with full bath
- Designated flex/work space off kitchen



FIRST FLOOR



SECOND FLOOR



115 W Kagy Blvd, Suite L | Bozeman, MT 59715 | info@blackwoodgroves.com | blackwoodgroves.com

