



THE PORCHES

# Plan 2

4 BEDROOMS | 3.5 BATHROOMS  
2,664 SF + 238 SF COVERED PORCH

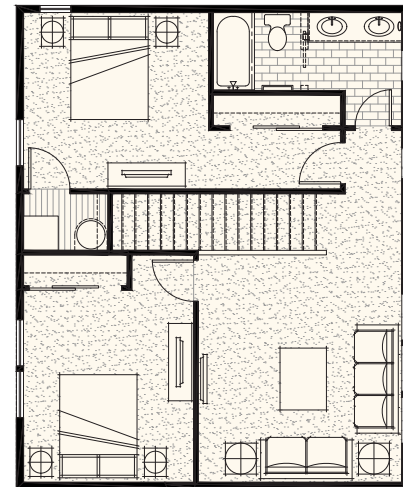
- Large primary bedroom with direct courtyard access, walk-in closet, double vanity, oversized shower & standing tub
- Ground-floor junior primary bedroom with en-suite bathroom & walk-in closet
- Second-level bedrooms with full bath and den/flex space
- Double-height great room with fireplace



## FIRST FLOOR



## SECOND FLOOR



115 W Kagy Blvd, Suite L | Bozeman, MT 59715 | [info@blackwoodgroves.com](mailto:info@blackwoodgroves.com) | [blackwoodgroves.com](http://blackwoodgroves.com)