



THE ARBOR HOUSES

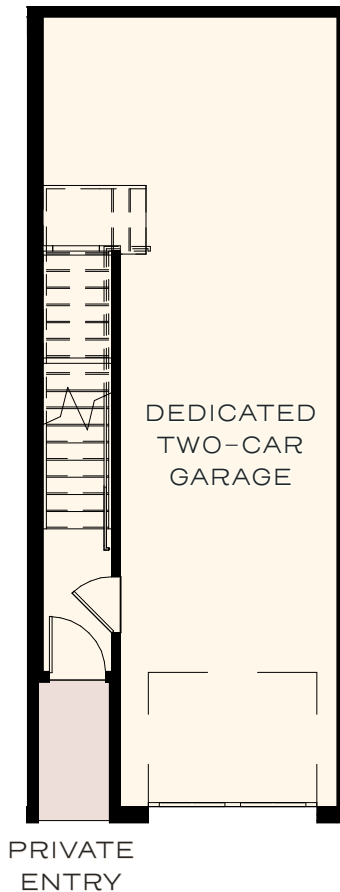
Plan A1

1 BED | 1 BATH | 2-CAR GARAGE
755 SF + 71 SF BALCONY

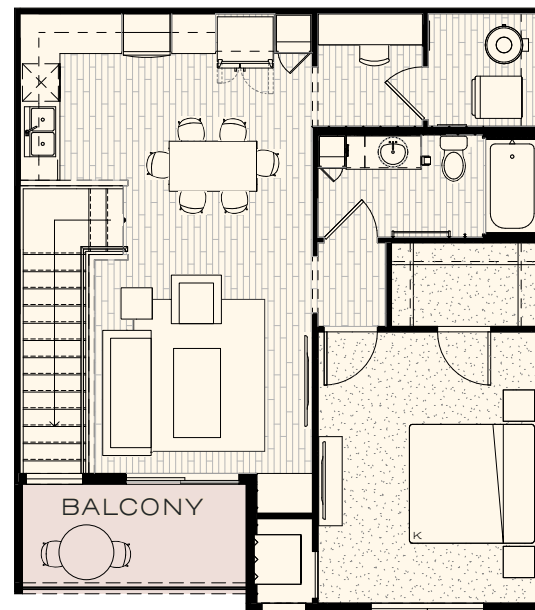
- Spacious L-shaped kitchen provides ample cabinet and storage space
- Open living concept ensures a seamless flow from the kitchen to the dining and living space
- Generously sized bedroom features a large walk-in closet
- Separate office nook/flex space and dedicated laundry room



GROUND FLOOR



SECOND FLOOR



115 W Kagy Blvd, Suite L | Bozeman, MT 59715 | info@blackwoodgroves.com | blackwoodgroves.com