



THE ARBOR HOUSES

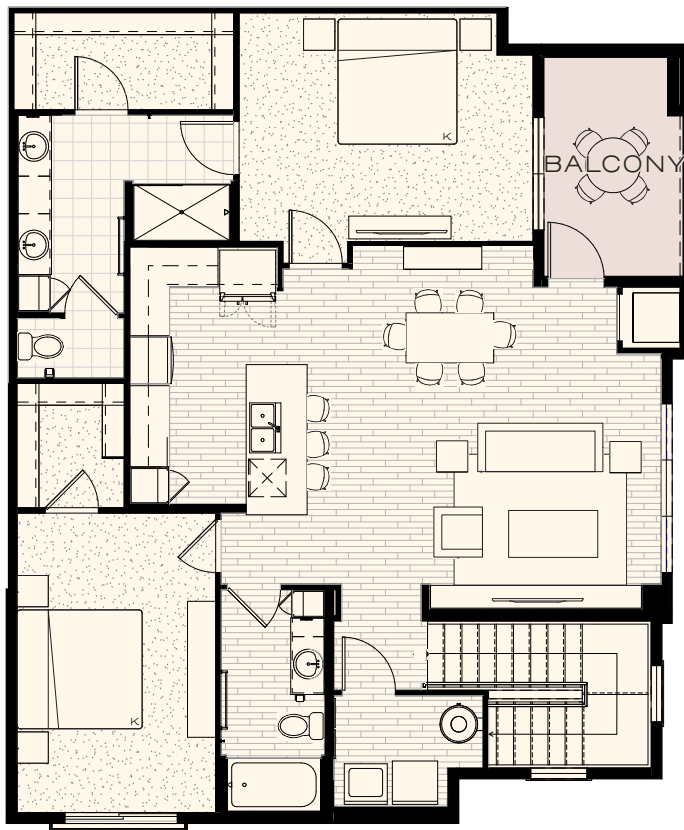
Plan B2

2 BED | 2 BATH | 1-CAR GARAGE
1,311 SF + 99 SF BALCONY

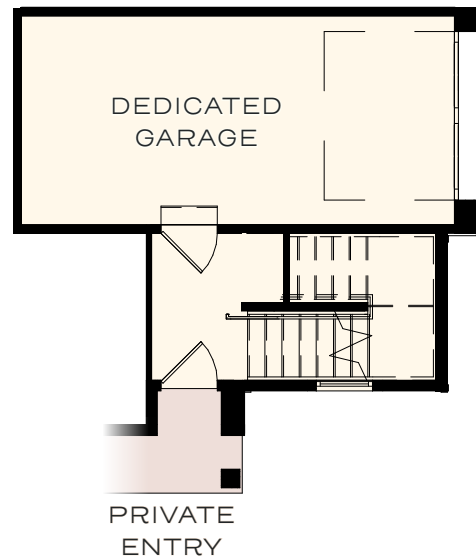
- Spacious primary bedroom with walk-in closet and ensuite bathroom that features a double vanity and oversized shower
- L-shaped kitchen with deepened island provides ample cabinet and storage space
- Open living concept ensures a seamless flow from the kitchen to the dining and living space
- Generously sized walk-out patio and dedicated laundry room



SECOND FLOOR



GROUND FLOOR



115 W Kagy Blvd, Suite L | Bozeman, MT 59715 | info@blackwoodgroves.com | blackwoodgroves.com