



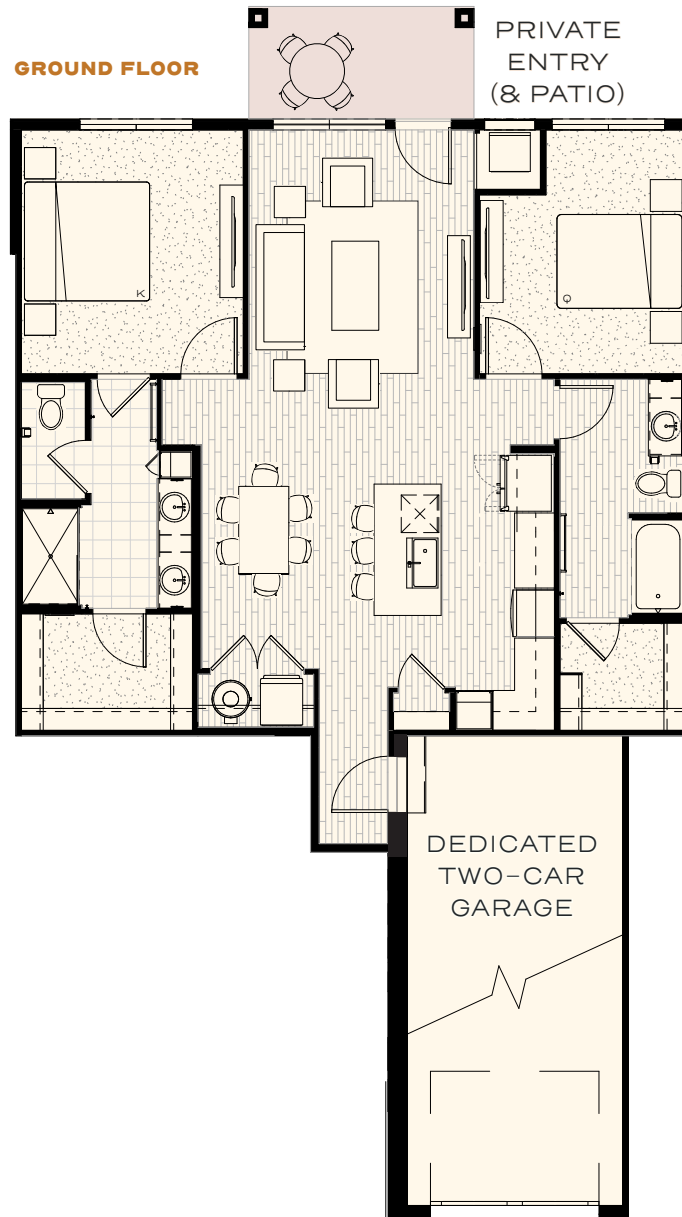
THE ARBOR HOUSES

Plan B3

2 BED | 2 BATH | 2-CAR GARAGE

1,208 SF + 72 SF PATIO

- Spacious primary bedroom with walk-in closet and ensuite bathroom that features a double vanity and oversized shower
- Large wrap-around kitchen with significant storage space and a deepened kitchen island for entertaining
- Dining area opens to the ground floor, walk-out porch emphasizing indoor/outdoor living



115 W Kagy Blvd, Suite L | Bozeman, MT 59715 | info@blackwoodgroves.com | blackwoodgroves.com

