



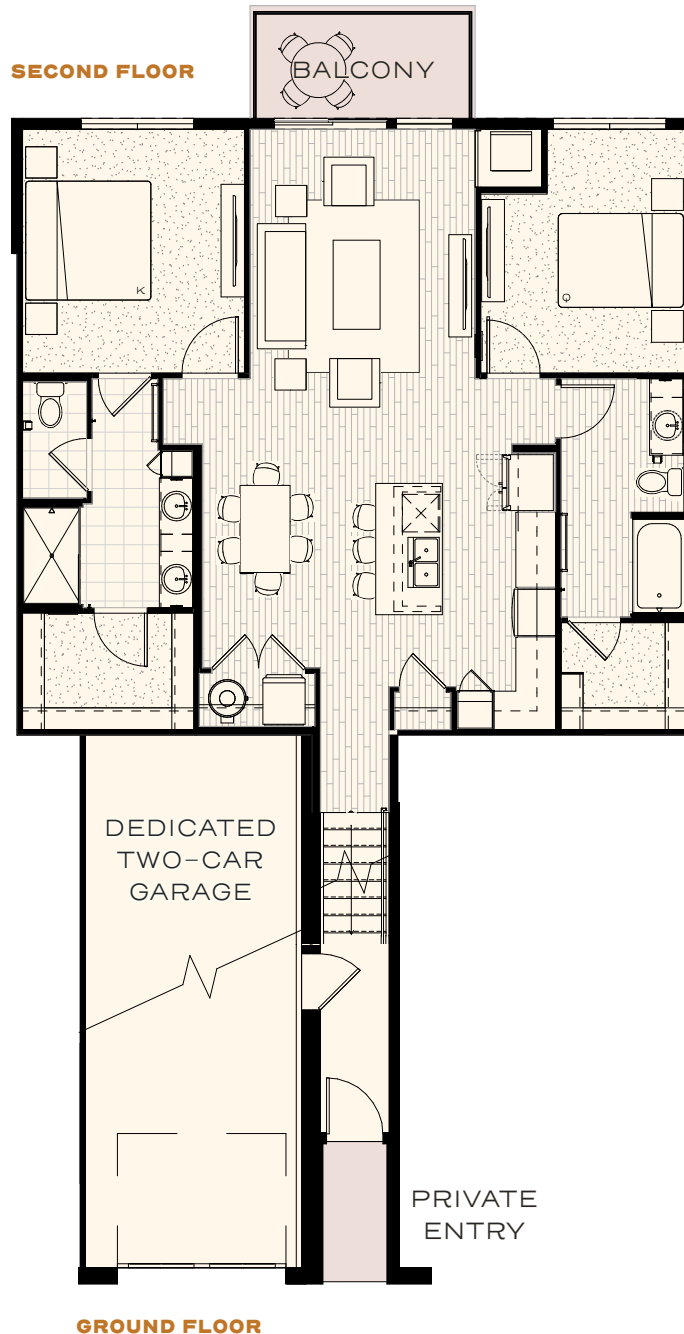
THE ARBOR HOUSES

Plan B4

2 BED | 2 BATH | 2-CAR GARAGE

1,198 SF + 74 SF BALCONY

- Spacious primary bedroom with a walk-in closet and ensuite bathroom that features a double vanity and oversized shower
- Open living concept ensures a seamless flow from the kitchen to the dining and living space
- Large wrap-around kitchen offers ample storage and a deepened kitchen island for entertaining



115 W Kagy Blvd, Suite L | Bozeman, MT 59715 | info@blackwoodgroves.com | blackwoodgroves.com