

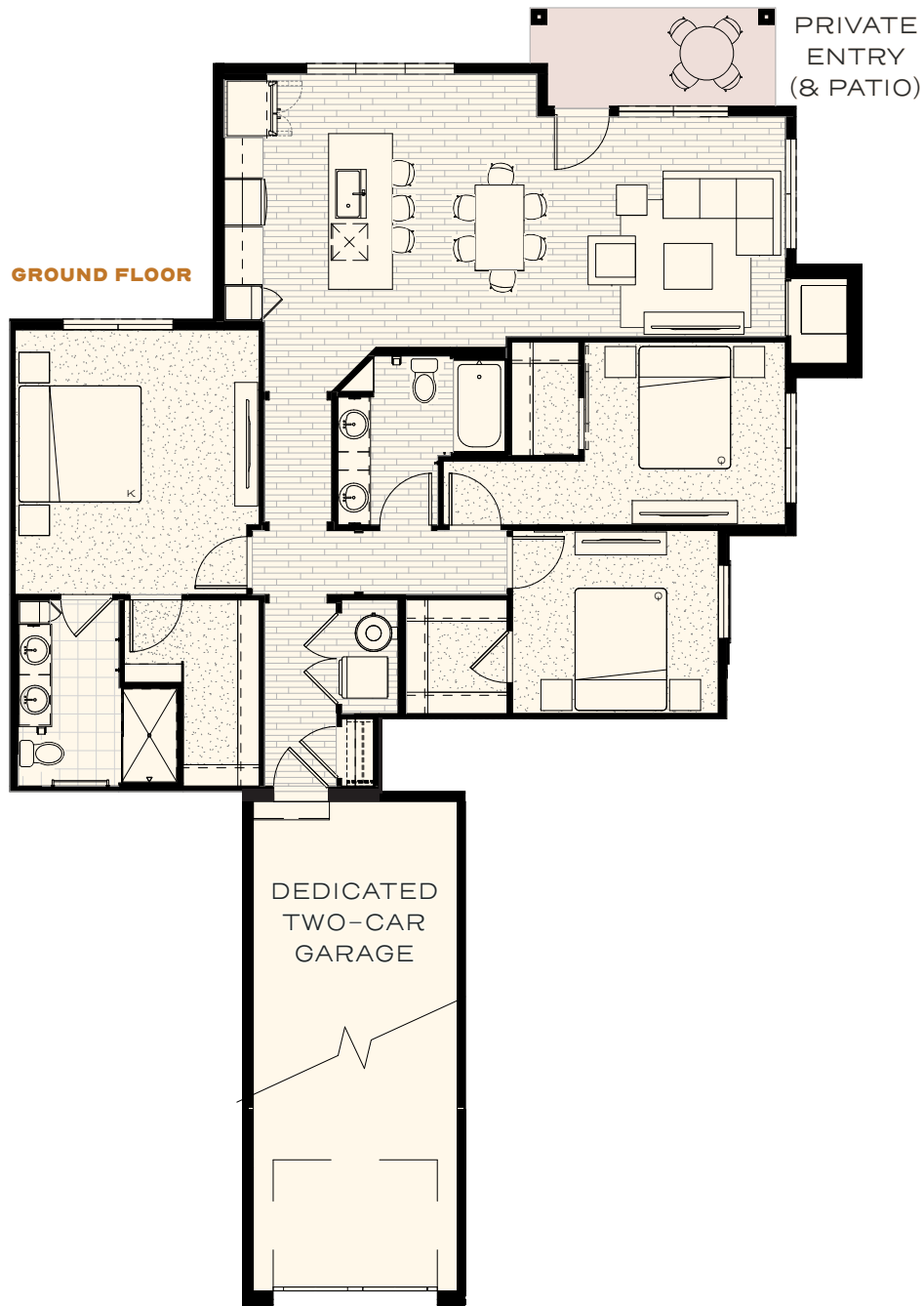


THE ARBOR HOUSES

Plan C1

3 BED | 2 BATH | 2-CAR GARAGE
1,400 SF + 72 SF PATIO

- Spacious primary bedroom with a walk-in closet and ensuite bathroom with a double vanity
- Secondary bedrooms adjacent to large bathroom with double vanity and oversized tub
- Large kitchen offers ample storage with a deepened kitchen island for entertaining
- Living area opens up to the ground floor, walk-out porch emphasizing indoor/outdoor living



115 W Kagy Blvd, Suite L | Bozeman, MT 59715 | info@blackwoodgroves.com | blackwoodgroves.com